

ER360-2800

EFORT

ER360-2800,
Maxium payload 360 kg with maxium reach 2792 mm.

Highlights

With a repeat positioning accuracy of up to ± 0.06 mm, it achieves world-class performance and meets the demands of high-precision applications. Its high-speed trajectory is smooth and shock-free, significantly optimizing cycle time and enabling highly efficient production. Supporting mainstream industrial fieldbus protocols and providing both an SDK and offline simulation software, it reduces integration complexity and shortens commissioning time.

Applications

It can be used in applications including welding, dispensing, assembly, loading/unloading, material handling, and palletizing.

Industries

Suitable for industries such as automotive, aerospace, lithium battery, photovoltaic, and logistics.

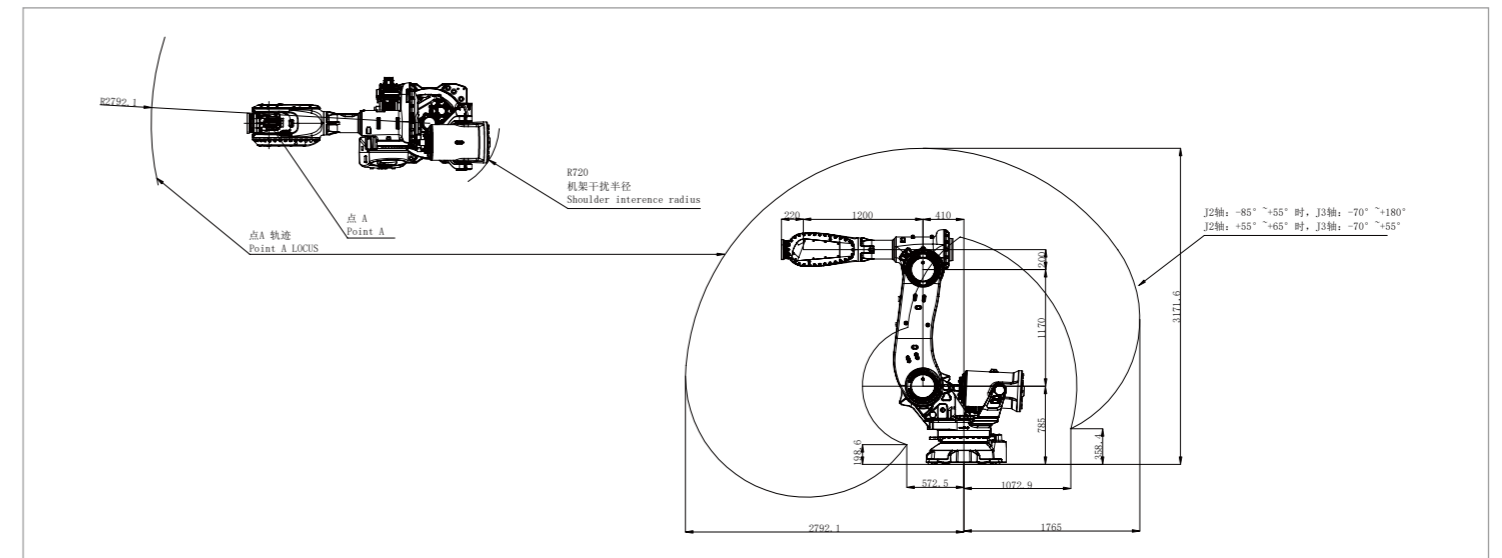


SPECIFICATIONS

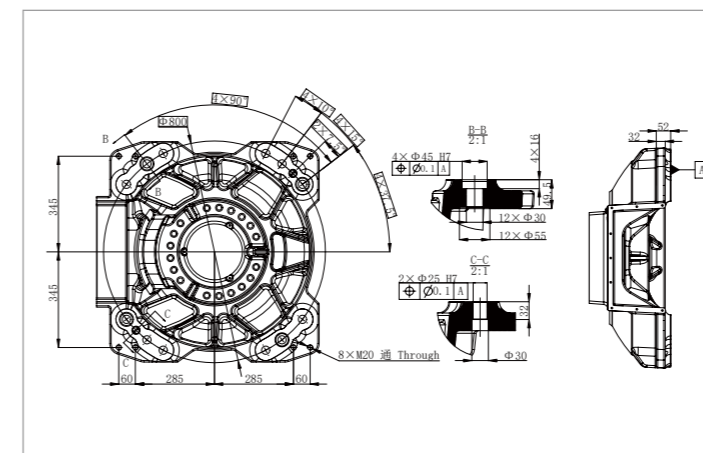
Model	ER360-2800	
Type	Articulated	
Controlled axes	6 Axes	
Max. payload on wrist	360 kg	
Repeatability	± 0.06 mm	
Robot weight	1840 kg	
Reach	2792 mm	
Robot IP grade	IP65/IP67 (Wrist)	
Cabinet IP grade	IP54	
Drive mode	AC servo drive	
Installation	Floor	
Installation enviroment	Ambient temperature	0~45 °C
	Ambient humidity	RH \leq 80% (No dew nor frost allowed)
	Vibration acceleration	4.9 m/s ² (<0.5 G)

Allowable load moment at wrist	J4	2200 N·m
	J5	2200 N·m
	J6	1000 N·m
Allowable load inertia at wrist	J4	230 kg·m ²
	J5	230 kg·m ²
	J6	145 kg·m ²
Maximum speed	J1	110°/sec
	J2	100°/sec
	J3	100°/sec
	J4	140°/sec
	J5	110°/sec
	J6	180°/sec
Motion range	J1	$\pm 185^\circ$
	J2	+65°-85°
	J3	+180°-70°
	J4	$\pm 360^\circ$
	J5	$\pm 130^\circ$
	J6	$\pm 360^\circ$

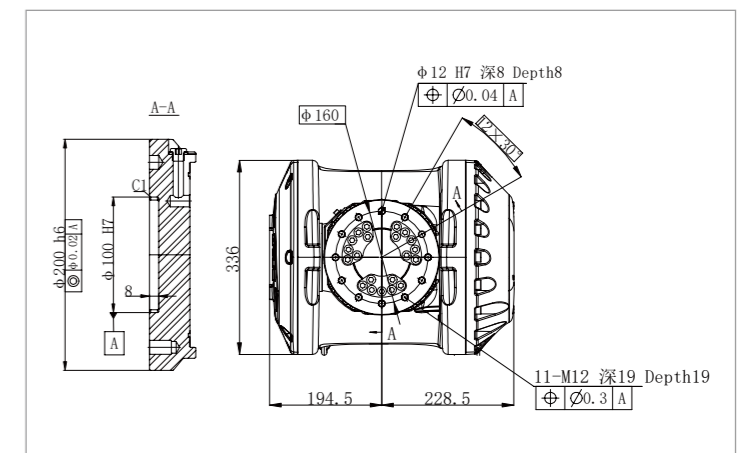
OPERATING SPACE



BASE MOUNTING SIZE



END FLANGE MOUNTING SIZE



EFORT Intelligent Robot Co., Ltd.
PHONE: (00 86) 400-052-8877
ADDRESS: No. 96, Wanchun East Road, Wuhu, China
(Anhui) Pilot Free Trade Zone
WWW.EFORT.COM.CN

*The final interpretation right belongs to EFORT Intelligent Robot Co., Ltd. Any updates will be made without prior notice.