

# ER280-3200

**EFORT**

**ER280-3200,**  
Maxium payload 280 kg with maxium reach 3188 mm.

## Highlights

With a repeat positioning accuracy of up to  $\pm 0.06$  mm, it achieves world-class performance and meets the demands of high-precision applications. Its high-speed trajectory is smooth and shock-free, significantly optimizing cycle time and enabling highly efficient production. Supporting mainstream industrial fieldbus protocols and providing both an SDK and offline simulation software, it reduces integration complexity and shortens commissioning time.

## Applications

It can be used in applications including welding, dispensing, assembly, loading/unloading, material handling, and palletizing.

## Industries

Suitable for industries such as automotive, aerospace, lithium battery, photovoltaic, and logistics.

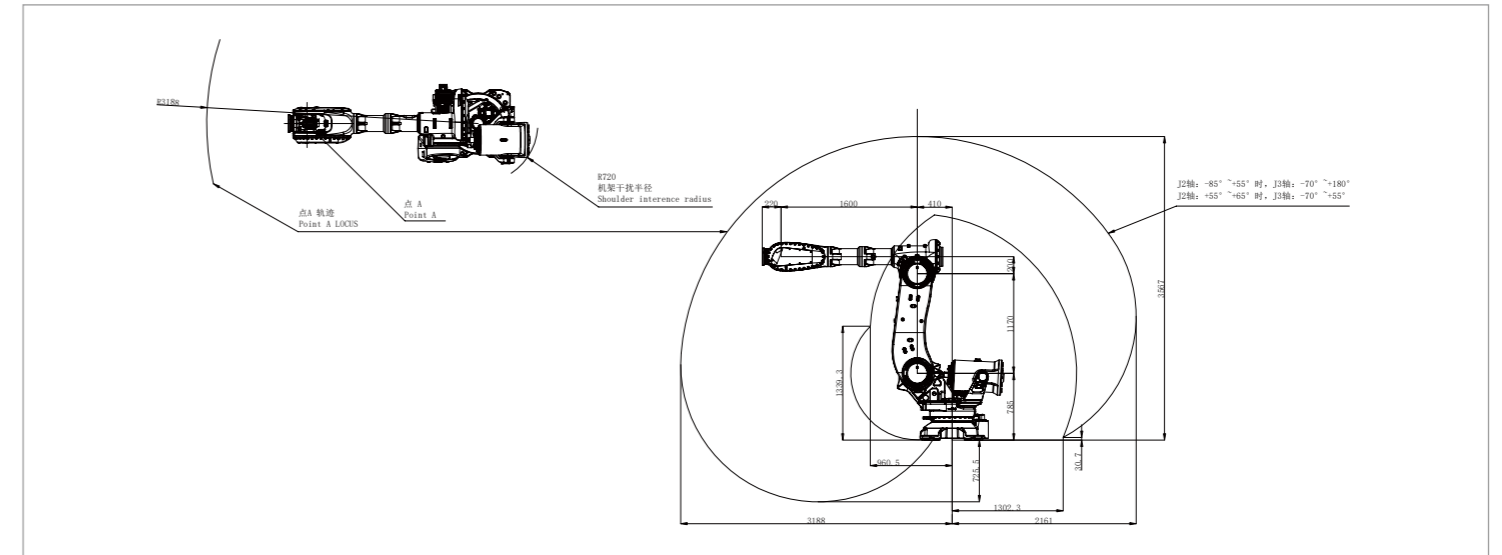


## SPECIFICATIONS

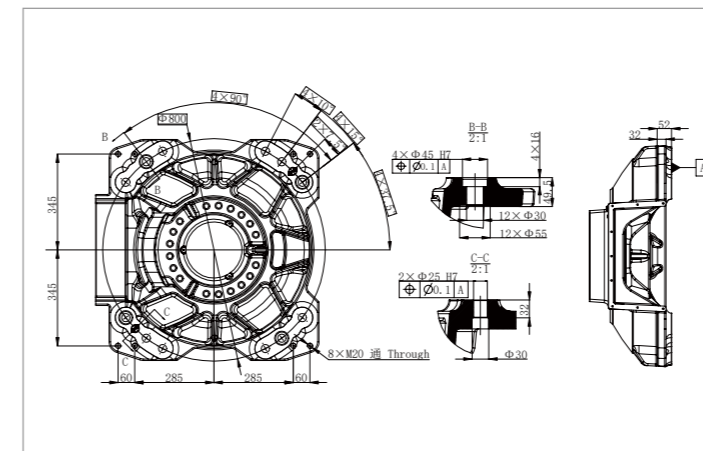
<b>Model</b>	ER280-3200	
<b>Type</b>	Articulated	
<b>Controlled axes</b>	6 Axes	
<b>Max. payload on wrist</b>	280 kg	
<b>Repeatability</b>	$\pm 0.06$ mm	
<b>Robot weight</b>	1865 kg	
<b>Reach</b>	3188 mm	
<b>Robot IP grade</b>	IP65/IP67 (Wrist)	
<b>Cabinet IP grade</b>	IP54	
<b>Drive mode</b>	AC servo drive	
<b>Installation</b>	Floor	
<b>Installation enviroment</b>	<b>Ambient temperature</b>	0~45 °C
	<b>Ambient humidity</b>	RH $\leq$ 80% (No dew nor frost allowed)
	<b>Vibration acceleration</b>	4.9 m/s <sup>2</sup> (<0.5 G)

<b>Allowable load moment at wrist</b>	<b>J4</b>	2200 N·m
	<b>J5</b>	2200 N·m
	<b>J6</b>	1000 N·m
<b>Allowable load inertia at wrist</b>	<b>J4</b>	230 kg·m <sup>2</sup>
	<b>J5</b>	230 kg·m <sup>2</sup>
	<b>J6</b>	145 kg·m <sup>2</sup>
<b>Maximum speed</b>	<b>J1</b>	110°/sec
	<b>J2</b>	100°/sec
	<b>J3</b>	100°/sec
	<b>J4</b>	140°/sec
	<b>J5</b>	110°/sec
	<b>J6</b>	180°/sec
<b>Motion range</b>	<b>J1</b>	$\pm 185^\circ$
	<b>J2</b>	+65°~85°
	<b>J3</b>	+180°~70°
	<b>J4</b>	$\pm 360^\circ$
	<b>J5</b>	$\pm 130^\circ$
	<b>J6</b>	$\pm 360^\circ$

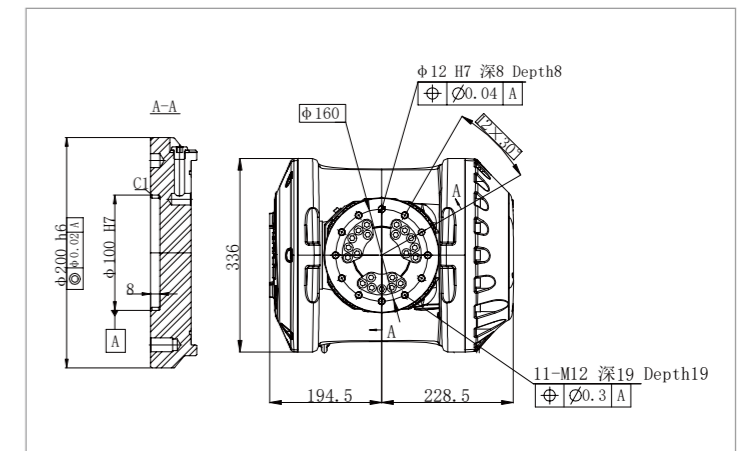
## OPERATING SPACE



## BASE MOUNTING SIZE



## END FLANGE MOUNTING SIZE



**EFORT Intelligent Robot Co., Ltd.**  
PHONE: (00 86) 400-052-8877  
ADDRESS: No. 96, Wanchun East Road, Wuhu, China  
(Anhui) Pilot Free Trade Zone  
WWW.EFORT.COM.CN

\*The final interpretation right belongs to EFORT Intelligent Robot Co., Ltd. Any updates will be made without prior notice.